

DELTA EQUIPMENT

Distributor of Quality Machinery and Attachments

RETAIL PRICE LIST 2026



Distributor of Quality Machinery and Attachments

Delta Equipment is a proudly family-owned Australian business with over 30 years of expertise in the machinery industry. We specialise in supplying premium quality machinery attachments and implements designed to maximise productivity, efficiency, and profitability.

Our mission is to support our customers with innovative, durable, and reliable solutions that help them tackle every challenge with confidence. At Delta Equipment, we are committed to delivering outstanding products backed by exceptional after sales service. As a trusted partner, we help businesses across Australia stay ahead in an ever changing and competitive market.

Why Choose Delta Equipment?



Australia Wide Distribution

We deliver quality machinery and attachments to customers across the country, wherever your work takes you.



Quick Dispatch

With streamlined processes and stock on hand, we ensure fast dispatch to keep your projects moving.



After Sales Service

Our dedicated support team is here to help long after your purchase, with service you can trust.



30+ Years' Experience

Benefit from decades of industry knowledge and expertise you can rely on.



Quality Machinery and Attachments

Each quality product is tested by us to ensure it's built to last and ready to perform.



For more information contact us now

(02) 4272 6044 | sales@deltaequipment.com.au | www.deltaequipment.com.au

| Discover the Delta Equipment Range

We source quality machinery and attachments from trusted global brands, chosen to handle tough jobs and deliver real value. Explore our range designed for productivity, efficiency and reliability on site.



Hydraulic Mulchers for Excavators and Skid Steers

3



Material Handling Systems

7



Sweeper and Broom Attachments

9



Specialist Vegetation Management and Paver Brush Attachments

11



HT1000 Mini Track Dumper

13

Note: Prices shown in this brochure are current and valid until 30th June 2026. As we continue to respond to changes in market conditions, pricing may be subject to adjustment without prior notice. Please contact us to confirm current pricing.

Excavator and Skid Steer Mulchers

T1 REV Hydraulic Mulcher for 1 – 3 T Excavators

Model	T1-60	T1-80
Machine Size (Tonne)	1 – 2	1.5 – 3
Cutting Width (mm)	600	800
Cutting Diameter (mm)	30	30
Weight (kg)	70	80
Oil Flow Required (L/min)	20-30	20-30
Price (RRP)	\$6,500 + GST	\$6,900 + GST

Features:

- REV Symmetrical head for bi-directional cutting efficiency.
- Smallest mulcher in the FEMAC range, perfect for 1.7 T machines.
- Casappa gear motor, direct driven rotor.
- Hammer teeth as standard. Great for clearing lantana, blackberry, gorse and small saplings.
- Optional KF1 Y-flails for improved grass cutting performance.
- Class leading power to weight ratio for mini excavators.



T3 Hydraulic Mulcher for 1.5 – 5 T Excavators

Model	T3-70	T3-90
Machine Size (Tonne)	1.5 – 3	2.5 – 5
Cutting Width (mm)	700	900
Cutting Diameter (mm)	50	50
Weight (kg)	130	150
Oil Flow Required (L/min)	20-30	30-40
Price (RRP)	\$7,800 + GST	\$8,500 + GST

Features:

- Adjustable feeler roller for an even, level cut along the ground. Standard on T3, T5 and T7. Ideal for roadside work.
- Casappa gear motor, direct driven rotor.
- Optional Y-flails for improved grass cutting performance



T5 Hydraulic Mulcher for 3 – 6 T Excavators

Model	T5-105
Machine Size (Tonne)	3 – 6T
Cutting Width (mm)	1050
Cutting Diameter (mm)	50
Weight (kg)	190
Oil Flow Required (L/min)	40
Price (RRP)	\$9,200 + GST

Features:

- Adjustable feeler roller for an even, level cut along the ground. Standard on T3, T5 and T7. Ideal for roadside work.
- Casappa gear motor, direct driven rotor.
- Optional Y-flails for improved grass cutting performance.



Excavator and Skid Steer Mulchers

T7 Hydraulic Mulcher for 4 – 8 T Excavators

Model	T7-125
Machine Size (Tonne)	5-8
Cutting Width (mm)	1250
Cutting Diameter (mm)	80
Weight (kg)	250
Oil Flow Required (L/min)	60-80
Price (RRP)	\$11,445 + GST

Features:

- Adjustable feeler roller for an even, level cut along the ground. Standard on T3, T5 and T7. Ideal for roadside work.
- Casappa cast iron gear motor, direct driven rotor.
- Optional Y-flails for improved grass cutting performance.



T9 REV Hydraulic Mulcher for 3 – 12 T Excavators

Model	T9-MZ70	T9-MZ90	T9-MZ105
Machine Size (Tonne)	3 – 8	4 – 8	5 – 10
Cutting Width (mm)	700	900	1050
Cutting Diameter (mm)	80	80	80
Weight (kg)	180	260	310
Oil Flow Required (L/min)	30	40 – 60	40 – 100
Price (RRP)	\$11,500 + GST	\$13,100 + GST	\$14,700 + GST



Model	T9-FS70	T9-FS90	T9-FS105
Machine Size (Tonne)	5 – 8	6 – 8	6 -12
Cutting Width (mm)	700	900	1050
Cutting Diameter (mm)	120	120	120
Weight (kg)	290	360	400
Oil Flow Required (L/min)	40 - 100	50-100	40 – 100
Price (RRP)	\$14,500 + GST	\$15,900 + GST	\$17,900 + GST



Model	T9-DF70	T9-DF90	T9-DF105
Machine Size (Tonne)	5 – 12	6 – 12	6 – 12
Cutting Width (mm)	700	900	1050
Cutting Diameter (mm)	250	250	250
Weight (kg)	340	400	490
Oil Flow Required (L/min)	40 – 100	50 – 100	50 – 100
Price (RRP)	\$21,500 + GST	\$23,500 + GST	\$25,900 + GST

Features:

- Most versatile mulcher in the FEMAC range - adaptable for a range of machine sizes and vegetation types.
- REV Symmetrical head cuts both ways without lifting off ground.
- Casappa cast iron gear motor, high performance triple V-belt driven rotor.
- MZ swinging flail hammer – rotor ideal for light vegetation clearing and grass cutting.
- FS 360° swinging forestry hammer – rotor ideal for medium duty mulching in rough terrain.
- DF fixed tooth forestry rotor. Ideal for heavy duty vegetation clearing.
- Hydraulic motor customisation available to match carrier flow rate.

Excavator and Skid Steer Mulchers

T9US Forestry Mulcher for 6 – 12T Excavators

Model	T9US-DFD70	T9US-DFD90	T9US-DFD110
Machine Size (Tonne)	5 – 12	6 – 12	6 – 12
Cutting Width (mm)	700	900	1100
Cutting Diameter (mm)	200	200	200
Weight (kg)	345	400	470
Oil Flow Required (L/min)	40 – 100	50 – 100	50 – 100
Price (RRP)	\$22,500 + GST	\$23,600 + GST	\$27,900 + GST

Features:

- DFD forestry rotor with bite limiter for reduced torque loss while mulching.
- Forward offset rotor allows mulching from side of trees.
- HF22 reversible teeth, can be rotated 180 degrees for extended working life.
- Casappa cast iron gear motor, heavy duty triple -belt driven rotor.
- Optional front hood (as shown).



T13 REV Hydraulic Mulcher for 8 – 16 T Excavators

Model	T13-MZ130	T13-FS130	T13-DF130
Machine Size (Tonne)	8 – 16	10 – 16	10 – 16
Cutting Width (mm)	1300	1300	1300
Cutting Diameter (mm)	80	120	250
Weight (kg)	540	650	745
Oil Flow Required (L/min)	80 – 100	80 – 100	80 – 100
Price (RRP)	\$19,500 + GST	\$25,900 + GST	\$29,400 + GST

Features:

- Excellent value mulcher for large excavators.
- REV Symmetrical head for bi-directional cutting.
- Casappa cast iron gear motor, heavy duty toothed belt driven rotor.
- MZ swinging flail hammer – rotor ideal for light vegetation clearing and grass cutting.
- FS 360° swinging forestry hammer – rotor ideal for medium duty mulching in rough terrain.
- DF fixed tooth forestry rotor. Ideal for heavy duty vegetation clearing.



T15 REV Hydraulic Mulcher for 10 – 25 T Excavators

Model	T15-MZ130	T15-MZ160	T15-FR130	T15-FR160	T15-DF130	T15-DF160
Machine Size (Tonne)	10 – 25	12 – 25	12 – 25	15 – 25	12 – 25	16 – 25
Cutting Width (mm)	1300	1600	1300	1600	1300	1600
Cutting Diameter (mm)	80	80	250	250	250	250
Weight (kg)	650	750	920	1020	950	1050
Oil Flow Required (L/min)	90 - 180	90 - 180	90 - 180	90 - 180	90 - 180	90 - 180
Price (RRP)	\$29,500 + GST	\$34,500 + GST	POA	POA	POA	POA

Features:

- REV Symmetrical head for bi-directional cutting.
- Casappa variable displacement piston motor, heavy duty toothed belt driven rotor.
- MZ swinging flail hammer – rotor ideal for light vegetation clearing and grass cutting.
- FR 360° swinging forestry hammer – rotor ideal for medium duty mulching in rough terrain.
- DF fixed tooth forestry rotor. Ideal for heavy duty vegetation clearing.



Excavator and Skid Steer Mulchers

T21 DFX REV Hydraulic Forestry Mulcher for 16 – 30 T Excavators

Model	T21-DFX 130	T21-DFX 160
Machine Size (Tonne)	16 – 30	18 – 30
Cutting Width (mm)	1300	1600
Cutting Diameter (mm)	500	500
Weight (kg)	1300	1400
Oil Flow Required (L/min)	100 – 180	100 – 180
Price (RRP)	\$47,200 + GST	\$53,500 + GST

Features:

- Powerful 500 mm mulching capacity, with DFX bite limiting rotor and patented tooth design.
- REV Symmetrical head cuts both ways without lifting off ground.
- Largest Mulcher in FEMAC range, suitable for large scale forestry projects.
- Casappa piston motor, heavy duty toothed belt driven.



S5 Hydraulic Mulcher for Skid Steer Loaders 50 – 90 hp

Model	S5-MZ160	S5-MZ180	S5-MZ200
Machine (hp)	50 – 90	50 – 90	50 – 90
Cutting Width (mm)	1600	1800	2000
Cutting Diameter (mm)	80	80	80
Weight (kg)	890	930	970
Oil Flow Required (L/min)	60 - 100	60 - 100	60 - 100
Price (RRP)	\$18,900 + GST	\$21,900 + GST	\$23,750 + GST

Features:

- Floating hitch system and roller for level cut on uneven terrain.
- Mechanical side shift for cutting along fence lines.
- Casappa cast iron gear motor, performance quad V-belt driven rotor.



S10 Hydraulic Forestry Mulcher for Skid Steer Loaders 70 – 120 hp

Model	S10-DF160	S10-DF180
Machine (hp)	70-120	70-120
Cutting Width (mm)	1600	1800
Cutting Diameter (mm)	300	300
Weight (kg)	1285	1420
Oil Flow Required (L/min)	100 – 180	100 – 180
Price (RRP)	\$47,900 + GST	\$51,900 + GST

Features:

- Powerful 300 mm mulching capacity, choice of carbide or steel teeth.
- Forward offset rotor with push bar, and hydraulic opening hood.
- Casappa piston motor, heavy duty toothed belt driven.



Material Handling Attachments

FTZ-UNI-15

Gripping Range (mm)	0 - 750
Gripper Width (mm)	420
Working Load Limit (kg)	1500
Dead Weight (kg)	85
Price (RRP)	\$4,250 + GST

Features:

- For moving large sandstone blocks, precast concrete, steps, and limestone blocks.
- Automatic changeover mechanism between lift and release allows single operator to move blocks efficiently.
- Ideal for moving 2000 x 500 x 500 mm sandstone blocks.



FTZ-MULTI-15

Model	FTZ-MULTI-15 -WB-G-42	FTZ-MULTI-15 -WB-G-120	FTZ-MULTI-15 -WB-SQ
Gripping Range (mm)	200 – 1250	200 – 1250	200 – 1250
Gripper Width (mm)	420	1200	720 (Steel Fingers)
Working Load Limit (kg)	1500	1500	1500
Dead Weight (kg)	110	142	129
Price (RRP)	\$4470 + GST	\$4850 + GST	\$6050 + GST

Features:

- Modular grab with large gripping range of 1250mm.
- Interchangeable grippers for different applications. Steel Fingers for moving rough cut boulders.
- Prices include basic unit and 1 set of grippers as specified.



TSZ-UNI

Gripping Range (mm)	50 – 600
Gripper Width (mm)	350
Working Load Limit (kg)	800
Dead Weight (kg)	31
Price (RRP)	\$1,800 + GST

Features:

- For moving sandstone blocks, precast concrete, steps and limestone blocks.
- Automatic toggle between lift and release allows single operator to move blocks efficiently.
- Ideal for moving blocks up to 600kg.



Material Handling Attachments

CSG-400

Gripping Range (mm)	30 - 150
Gripper Width (mm)	200
Working Load Limit (kg)	400
Dead Weight (kg)	14.5
Price (RRP)	\$950 + GST

Features:

- For moving concrete sleepers quickly and efficiently.
- Ideal for long and heavy sleepers.
- Non-marking white grippers



FTZ-MAXI-25 AND FTZ-MAXI-50

Model	FTZ-MAXI-25	FTZ-MAXI-50
Gripping Range (mm)	200 - 1200	400 - 1200
Gripper Width (mm)	420	720
Working Load Limit (kg)	2500	5500
Dead Weight (kg)	132	260
Price (RRP)	\$7,900 + GST	\$9,500 + GST

Features:

- For moving extra-large sandstone and precast concrete elements.
- Automatic toggle between lift and release allows single operator to move blocks efficiently.



RG Pipe Grabs

Model	RG 8/40	RG 20/80	RG 20/85 SAFELOCK	RG 75/125 SAFELOCK	RG 100/150 SAFELOCK
Outside Diameter of Pipe (mm)	80 - 400	200 - 800	200 - 870	720 - 1280	970 - 1530
Gripper Width (mm)	500	420	420	440	460
Working Load Limit (kg)	430	1500	2500	4000	6000
Dead Weight (kg)	45	92	175	370	550
Price (RRP)	\$3,500 + GST	\$4,950 + GST	\$7,695 + GST	\$14,900 + GST	\$19,950 + GST

Features:

- For safely moving and laying pipes on civil construction sites.
- Ultra-slim design allows laying of pipes in narrow trenches.
- Automatic toggle between lift and release allows single operator to move pipes efficiently.
- Mechanism keeps pipe held until operator releases.
- SAFELOCK models have a double locking mechanism to prevent early release.



Sweeper Attachments

BIG	
Working Width (mm)	1800
Dead Weight (kg)	500
Fill Capacity (l)	497
Oil Flow Required (l/min)	40
Price (RRP)	\$11,900 + GST
Price w/ Water Spray (RRP)	\$13,900 + GST

Features:

- Ideal for roadworks. Available with poly or steel bristles.
- Compact design, protected drive components, ideal for transport between worksites.
- Also available in 1200, 1500 and 2100 mm widths.
- Internal motor.
- Extremely heavy duty frame.



Plus 590	
Working Width (mm)	1350 – 2600
Dead Weight (kg)	262 – 545
Fill Capacity (l)	300 – 353
Oil Flow Required (l/min)	30 – 50
Price (RRP)	POA

Features:

- Easily adjustable brush height for even wearing of bristles.
- Hydraulic emptying, optional dust suppression water spray system and side brush.
- Made custom to order to suit your application.



PROFI 660	
Working Width (mm)	2000 – 2800
Dead Weight (kg)	445 – 504
Fill Capacity (l)	315 – 431
Oil Flow Required (l/min)	40 – 50
Price (RRP)	POA

Features:

- Large working width
- Different hitching systems available to suit various carrier machines.



Sweeper Attachments

PROFI GIGANT

Working Width (mm)	2600 – 3500
Dead Weight (kg)	1357 – 1486
Fill Capacity (l)	760 – 1025
Oil Flow Required (l/min)	100
Price (RRP)	POA

Features:

- Large working width
- Variety of hitching systems available to suit various carrier machines.
- Largest TUCHEL broom available, for heavy duty industrial sweeping applications.



SOLO

Model	1500	1800	2300	2800
Working Width (mm)	1500	1800	2300	2800
Dead Weight (kg)	110	133	156	185
Price (RRP)	POA	\$4,200 + GST	\$4,700 + GST	POA

Features:

- Easily mounted push broom
- Easily replaceable bristle strips
- Adaptable to most machines with different hitching systems.



Vegetation Management Attachments

SA1000 Swivel Trim with Cutter Bar		
Model	SA1000 w/1500mm cutter bar	SA1000 w/1800mm cutter bar
Machine Size	60 hp + Tractor	80 hp + Tractor
Cutting Width (mm)	1500	1800
Cutting Diameter (mm)	40	40
Weight (kg)	310	325
Oil Flow Required (L/min)	40	60
Price (RRP)	\$11,500 + GST	\$11,900 + GST



SA1000 Swivel Trim with Multisaw		
Model	SA1000 w/1400mm Quad-Saw	SA1000 w/2000mm Six-Saw
Machine Size	60 hp + Tractor	80 hp + Tractor
Cutting Width (mm)	1400	2000
Cutting Diameter (mm)	80	80
Weight (kg)	300	320
Oil Flow Required (L/min)	45	45
Price (RRP)	\$16,500 + GST	\$18,900 + GST



Features:

- Great for cutting hedges and fruit trees in orchards.
- Hydraulically tilt cutting head up to 110 degrees. 1000 mm mechanical side shift and swivel cutter head to opposite side of machine by removing one pin. SA1000 is compatible with other Slanetrac attachments.
- Euro hitch as standard, also available with universal skid steer hitch.
- Custom telehandler hitches and alternative tractor hitches also available (POA).
- Can be supplied with blank hitch to suit customisation.
- Available with 12v solenoid to operate on machines with single hydraulic circuit - Additional \$600 + GST

HC150 and HC180 Hedge Cutter Bar		
Model	HC150	HC180
Machine Size (Tonne)	0.8 – 3	3.5 – 7.5
Cutting Width (mm)	1500	1800
Cutting Diameter (mm)	40	40
Weight (kg)	60	75
Oil Flow Required (L/min)	20 – 30	50 – 80
Price (RRP)	\$7,250 + GST	\$7,500 + GST



Features:

- Precise and clean cut, perfect for hedges.
- Robust construction, low maintenance.
- Individually replaceable cutting teeth.
- Fingers guide vegetation into cutting area.
- Very strong attachment with basic operation.

Vegetation Management Attachments

HS55 and HS75 Saw Head

Model	HS55	HS75
Machine Size (Tonne)	2 - 3.5	3.5 - 8
Saw Diameter (mm)	550	750
Cutting Diameter (mm)	150	250
Weight (kg)	55	65
Oil Flow Required (L/min)	25 - 50	35 - 90
Price (RRP)	\$7,250 + GST	\$7,950 + GST

Features:

- High RPM blade cuts thick branches cleanly.
- Perfect for roadside tree pruning and other selective pruning.
- Low Maintenance, 5 mm thick carbon steel saw blade.



FH80 and FH100 Excavator Slasher

Model	FH80	FH100
Machine Size (Tonne)	2 - 3.5	4 - 8
Cutting Width	800	1000
Cutting Diameter (mm)	100	120
Weight (kg)	150	165
Oil Flow Required (L/min)	40 - 90	40 - 100
Price (RRP)	\$8,000 + GST	\$8,500 + GST

Features:

- Stacked twin flails shred vegetation into smaller, finer material.
- Rugged steel construction, built to last.



RB80 Excavator Paving Brush

Model	RB80 Single Soft	RB80 Quad Soft	RB80 Single Hard
Machine Size (T)	1.5 - 8	1.5 - 8	1.5 - 8
Working Area (mm)	450	800	450
Weight (kg)	75	90	75
Oil Flow Required (L/min)	35 - 70	35 - 70	35 - 70
Price (RRP)	\$7,500 + GST	\$7,750 + GST	\$7,800 + GST

Features:

- Low maintenance, easily replaceable bristles.
- Clean around irregular objects thanks to manoeuvrable excavator arm.
- Ideal for cleaning up after roadworks and construction.
- Water free clearing of weeds from hard surfaces such as concrete, cobblestone, pavers, & bitumen.
- Custom bristle configurations available on request



Mini Track Dumper

HT1000 MINI TRACK DUMPER

This compact petrol mini track dumper has a maximum width of 700 mm and a length of 1,900 mm. It can turn on its own length, offering greater accessibility and manoeuvrability in urban areas or hard to reach areas.

Powered by a 13 H.P Honda GX 390 electric start engine, this robustly built track dumper has a load capacity of 1 tonne. Complete with high tipping capacity the HT1000 track dumper offers a tipping height of 1,300 mm, easily tipping debris into skips.

With very low ground pressure and rubber tracks, the HT1000 mini track dumper offers minimal ground damage while excellent gradability and stability ensure safe operating of the dumper.

Paired with a mini-excavator, backyard excavations have never been more efficient. Reduce manual labour and increase productivity.



Features:

- 1 Tonne Capacity
- Bin Capacity: up to 0.5 Cubic Meters (500 Litres)
- High Tip: 1,300 mm
- Narrow Access: 700 mm Wide (Fits through doorways)
- Compact Size: 1,900mm Length
- Simple Twin Joystick Control
- Tough steel frame and body, no weak fibreglass panels
- Braked Drive Motors
- Folding Platform for Operator to Ride On
- Excellent offroad ability
- Excellent stability thanks to low centre of gravity

Model	HT 1000
Load Capacity	1 Tonne
Width (mm)	700
Length (mm)	1,900
Tipping Height (mm)	1,300
Engine	Honda GX390 Petrol Engine
Power (kg)	13 hp (10.4 kw)
Weight (kg)	670
Price (RRP)	\$25,900 + GST





DELTA EQUIPMENT

Why Delta Equipment?

- Australia Wide Distribution
- Quick Dispatch
- After Sales Service
- 30+ years' Experience
- High Quality Attachments



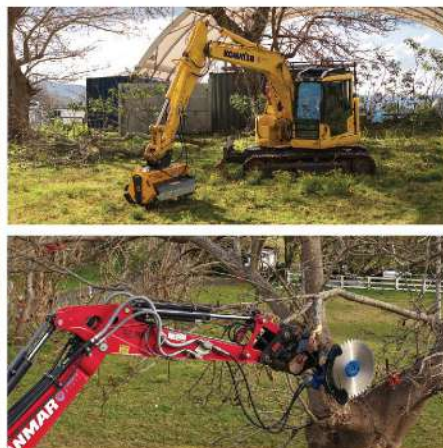
sales@deltaequipment.com.au



(02) 4272 6044



www.deltaequipment.com.au



Note: Prices shown in this brochure are current and valid until 30th June 2026. As we continue to respond to changes in market conditions, pricing is subject to change without prior notice. Please contact us to confirm current pricing. Some products may not be available in every state or region and might need to be shipped from another warehouse.