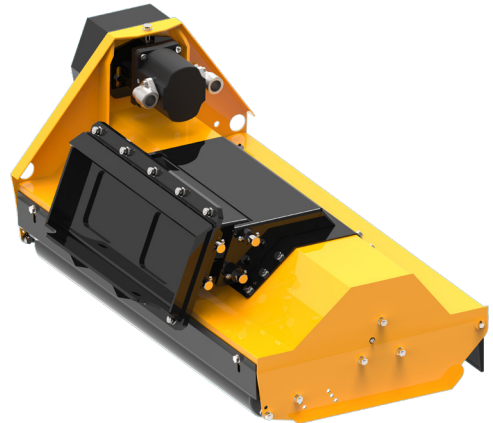
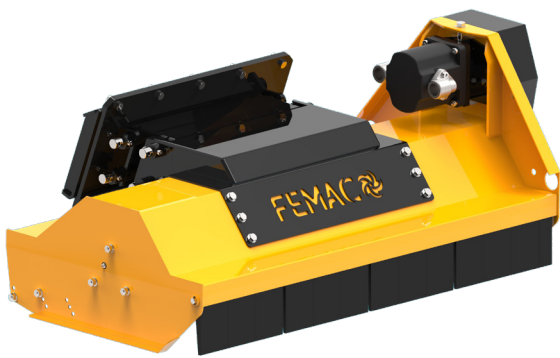


S1

For Mini Track Loaders



MZ



HF2
Ø max 5 cm

**STANDARD
EQUIPMENT**

		S1 MZ120	S1 MZ140	S1 MZ160
	hp	50-90	50-90	50-90
	cm/inch	120	140	160
	cm/inch	134x67x54	154x67x54	174x67x54
	kg/lbs	200	220	240
	cc	22-27-34	22-27-34	22-27-34
	oil - L/min (gal/min)	40-50-60	40-50-60	40-50-60
	bar/psi (min-max)	170-220	170-220	170-220
	transmission	3	3	3
	rotor diameter cm/inch	31	31	31
		20	24	28

Technical features and standard equipment

- MZ Helicoidal Rotor with austempered hammers
- High-performance V-belts transmission
- Internally reinforced double-case body with interspace
- Protective belts cover
- Inside Rotor Supports with "labyrinth" for the protection of the bearings from the impurities
- Bearings of 1st quality
- Cast iron gear motor
- Accident prevention protections according to EC directives

Accessories

- S1 Block valves
- S1 Self-levelling support
- S1 Hoses kit
- Mini track hitch
- Skid steer loader hitch

Cast iron hydraulic gear motor range

	CC	22	27	34
	oil - L/min gal/min	40	50	60